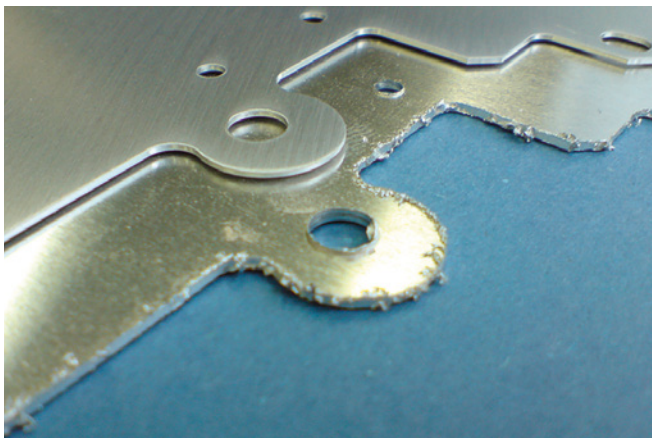


Metalroll Belts

SLEEVE BELT (WITHOUT JOINT) FOR METAL FINISHING MACHINES.



Picture 1: Deburring Application

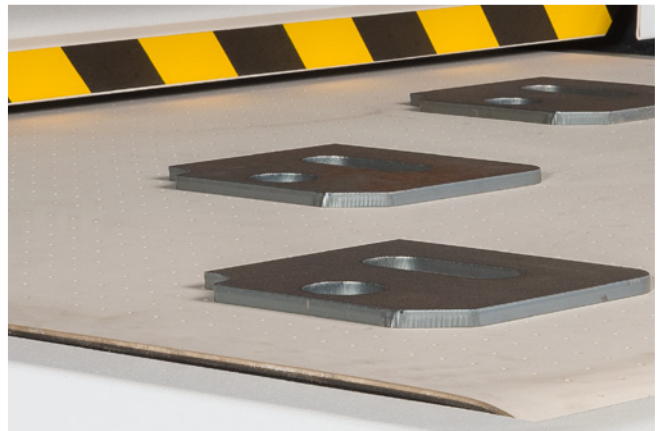
This application is becoming more and more common and has gradually increased over the past 20 years with the expanding technology of laser and plasma cutting and the need to obtain different surface details on metal (steel, iron, aluminium, tungsten, titanium) and on the surface of composite material.

There are several processing conditions that range from the removal of surface oxides to the removal of cutting burrs, brushing, sanding, polishing or buffing.

The main processes are:

- Deburring
- Edge rounding
- Sanding
- Calibration
- Rust removal (Oxide, Impurity, ...)
- Graining
- Lapping

The machines can be distinguished in machines for "dry" and "wet" working according to the material being processed and the required quality.



Courtesy of Timesavers International B.V.

Cooperation with the leading machine manufacturers in this sector (all well known also as producers of wood sanding/calibrating machines) and our special sleeve technology (seamless rings) allow us to offer a range of textile structures and rubber covers that makes the METALROLL the perfect product for each of the above listed applications.

So the main features of a METALROLL are:

- High flexibility and adaptability to pulleys with small diameters
- Absolute running stability which ensures high precision in material tracking
- Low compression deformation due to pressure rollers
- Abrasion resistance
- Resistance to the absorption of typical metal working fluids (lubrication processing aids)
- A high grip value between the belt and the processed material, above all in wet conditions where coefficient of friction of the rubber belt is higher than that of other materials (Thermoplastics, PVC, PU)
- Retention of the original friction coefficient after usage
- Possibility to operate at high speeds and under longitudinal, transverse, swinging and pulsing loads
- Use with parallel, counter rotating or oscillating spindles

Here follows a list of the main versions of METALROLL, currently available.

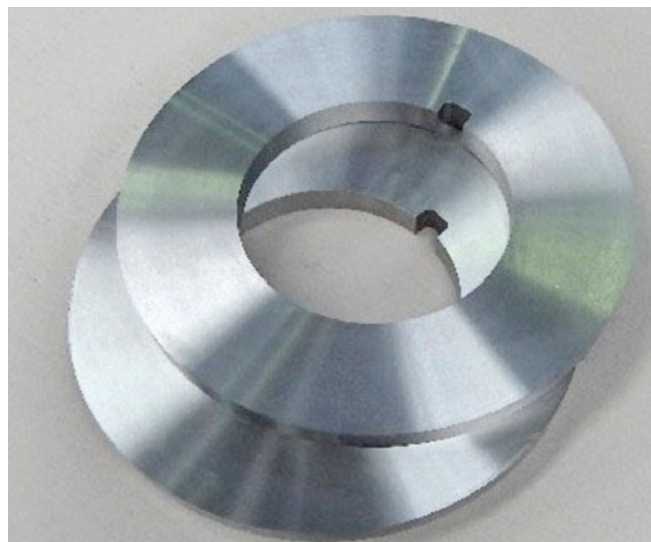
Version	Color	Rubber*	Tensile Core	Application	Abrasion Resistance	Thermal Resistance	Oil Resistance on the top surface
NC	black	Nitrile Neoprene	TED100	Dry	●●●	●●●	●●●
NC	black	Nitrile Neoprene	TEM80	Wet	●●●	●●●	●●●
NCB	white	Nitrile Neoprene	TED100	Dry	●●●	●●	●●●
NCB	white	Nitrile Neoprene	TEM80	Wet	●●●	●●	●●●
HB	white	Hypalon	TED100	Dry	●●●●●	●●●	●●
HB	white	Hypalon	TEM80	Wet	●●●●●	●●●	●●

* other compound available upon request

In case of particular needs, our technical staff remains at your disposal to study/suggest the best solution.



Picture 2: Metal Working Machine*



Picture 3: Brushed Surface

* Courtesy of COSTA Levigatrici S.p.A.



WIN WIN S.r.l.
 Cap. Soc. € 100.000,00 i.v.
 C.F P.iva e Reg. Impr. CO 03289090130
 www.BeltTS.com

Operational & Legal Address
 Via Risorgimento, 8
 22044 Inverigo (CO)
 Italy

Tel. +39 031.604111
 Fax. +39 031.604399
 info@winwingomma.com
 info@beltts.com

Drawing, materials and other data are subject to changes prior notice by WinWin S.r.l. All right reserved. Publication is protected by copyright and cannot be reproduced in any part without permission by the Company. Please, be aware that WinWin S.r.l. is the only owner of the know-how of former Cigo Industria Gomma S.r.l.